

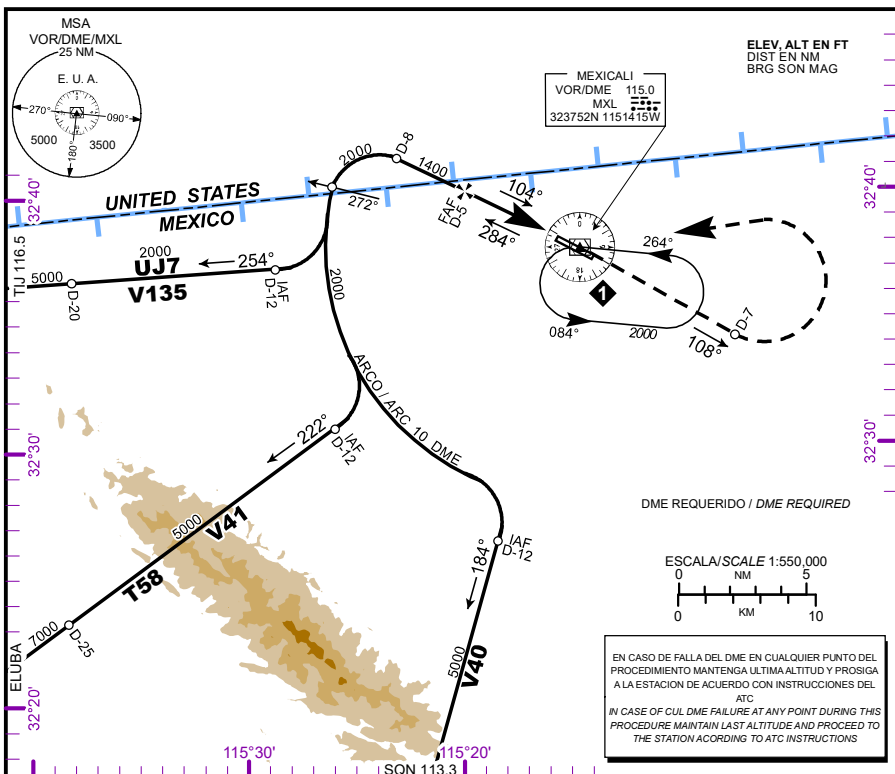
CARTA DE APROXIMACION
POR INSTRUMENTOS
INSTRUMENT
APPROACH CHART
(IAC)

ATIS 127.6
TWR/APP 118.2

ELEV AD 74 FT
VAR 13° E

MEXICALI
AEROPUERTO INTL / INTL AIRPORT
GRAL. RODOLFO SANCHEZ TABOADA
VOR Y RWY 10

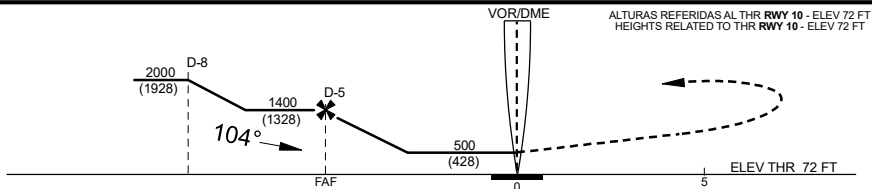
ALTITUD DE TRANSICION
TRANSITION ALTITUDE
18500



APROXIMACION FRUSTRADA / MISSED APPROACH

ASCIENDA EN RADIAL 108° HASTA D-7, EFECTUE VIRAJE DE GOTA A LA IZQUIERDA DENTRO DE 10 NM HACIA EL VOR/DME/MXL HASTA LA ALTITUD MINIMA DE ESPERA.

CLIMB VIA MXL VOR R-108° TO D-7, THEN TURN LEFT WITHIN 10 NM TO VOR/DME/MXL AT THE MINIMUM HOLDING ALTITUDE.



| CAT | A | B | C | D |
|--|-----------------------|---|---------------------------|-----------------------|
| DIRECT OCA (OCH) / MDA (MDH) 500 (428) | 1 (1600 M) | | 1 1/4 (2000 M) | 1 1/2 (2400 M) |
| CIRCLING OCA (OCH) / MDA (MDH) | 580 (506) -1 (1600 M) | | 640 (566) -1 1/2 (2400 M) | 640 (566) -2 (3200 M) |

GRADIENTE DE DESCENSO / RATE OF DESCENT

| VEL GS (KTS) | 80 | 100 | 120 | 140 | 160 | 180 | 200 |
|---------------------------|------|------|------|------|------|------|------|
| FAF THR 4.13 NM | | | | | | | |
| FT/MIN | 413 | 516 | 619 | 722 | 825 | 928 | 1031 |
| MIN:SEC | 3:45 | 3:00 | 2:30 | 2:09 | 1:52 | 1:40 | 1:30 |

ALTITUD MINIMA SEGUN
DISTANCIA DME/MXL /
MINIMUM ALTITUDE ACCORDING
TO DISTANCE DME/MXL

| | 5 | 4 | 3 |
|-----------|----------------|----------------|--------------|
| NM | 1400 (1328) | 1090 (1018) | 780 (708) |
| FT | | | |

CAMBIOS: ELUBA; T58; CNL NDB/ENS; V58 (ENS-MXL)