

CARTA DE APROXIMACION
POR INSTRUMENTOS (IAC)

MERIDA / AEROPUERTO INTERNACIONAL (MMMD)

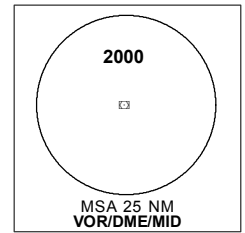
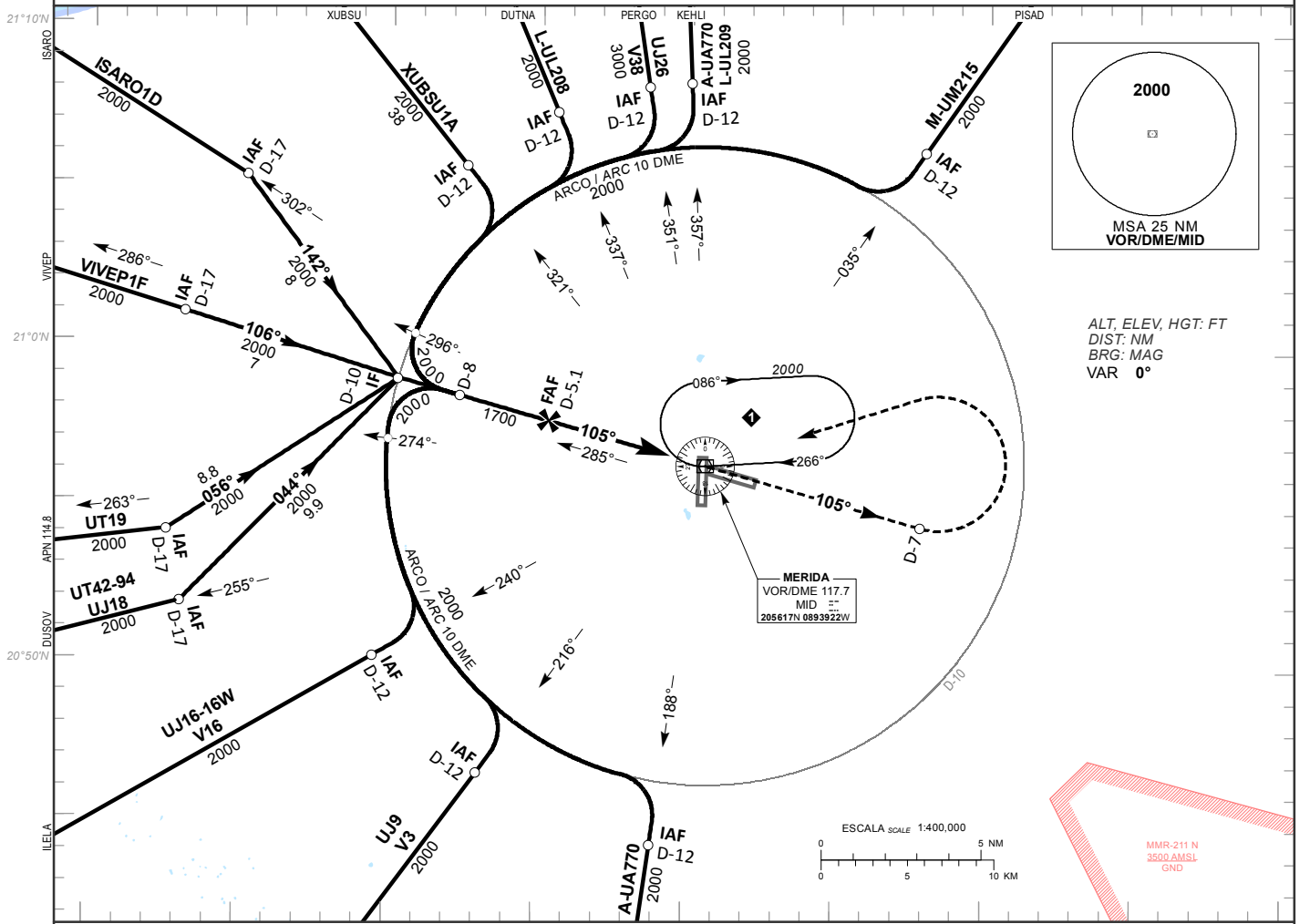
INSTRUMENT APPROACH CHART (IAC)

VOR Y RWY 10

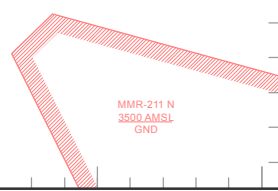
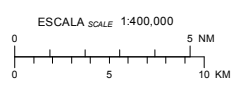
TWR 118.3	APP 121.2	ATIS 127.9	FIS 126.9	EMERG 121.5	AD ELEV 37 FT
--------------	--------------	---------------	--------------	----------------	---------------

APCH FRUSTRADA: ASCIENDA EN RADIAL 105° HASTA D-7, EFECTUE VIRAJE DE GOTA A LA IZQUIERDA DENTRO DE 10 NM HACIA EL VOR/DME/MID HASTA LA ALTITUD MINIMA DE ESPERA.
MISSED APCH: CLIMB VIA MID VOR R-105° TO D-7, THEN TURN LEFT WITHIN 10 NM TO VOR/DME/MID AT THE MINIMUM HOLDING ALTITUDE.

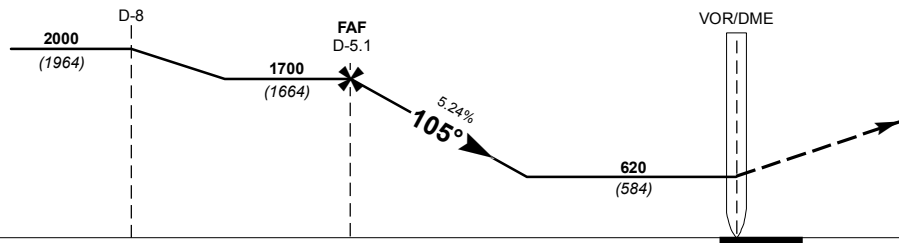
RMK: -DME REQUERIDO DME REQUIRED.



ALT, ELEV, HGT: FT
DIST: NM
BRG: MAG
VAR 0°



TA 18500
ALTURAS REFERIDAS AL THR RWY 10
HEIGHTS RELATED TO THR RWY 10



THR ELEV 36

C A B C D	DIRECTO STRAIGHT-IN OCA (OCH) / MDA (MDH) 620 (584)	GRADIENTE DE DESCENSO RATE OF DESCENT		FAF-THR 5.04				5.24%				ALTITUD MINIMA SEGUN DISTANCIA MINIMUM ALTITUDE ACCORDING TO DISTANCE	NM	5	4	3	2				
		GS (KTS)	80	100	120	140	160	180	200	FT / MIN	424		530	637	743	849	955	1061	FT	1670 (1634)	1350 (1314)
	MIN : SEC	3:47	3:01	2:31	2:10	1:53	1:41	1:31													
	CIRCULANDO CIRCLING CNL SECTOR "NE" DE INT DE RWYS OCA (OCH) / MDA (MDH) 660 (623)		1 (1600 M)		1 1/2 (2400 M)		1 3/4 (2800 M)		1 (1600 M)		1 3/4 (2800 M)		2 (3200 M)								

CAMBIOS: AWY UT94 (MID-DUSOV).