

CARTA DE APROXIMACION
POR INSTRUMENTOS (IAC)

GUADALAJARA / MIGUEL HIDALGO Y COSTILLA INTL (MMGL)

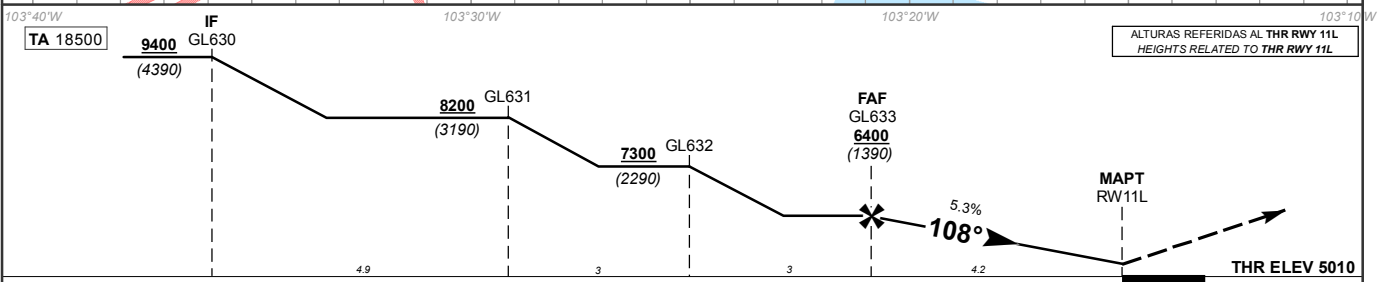
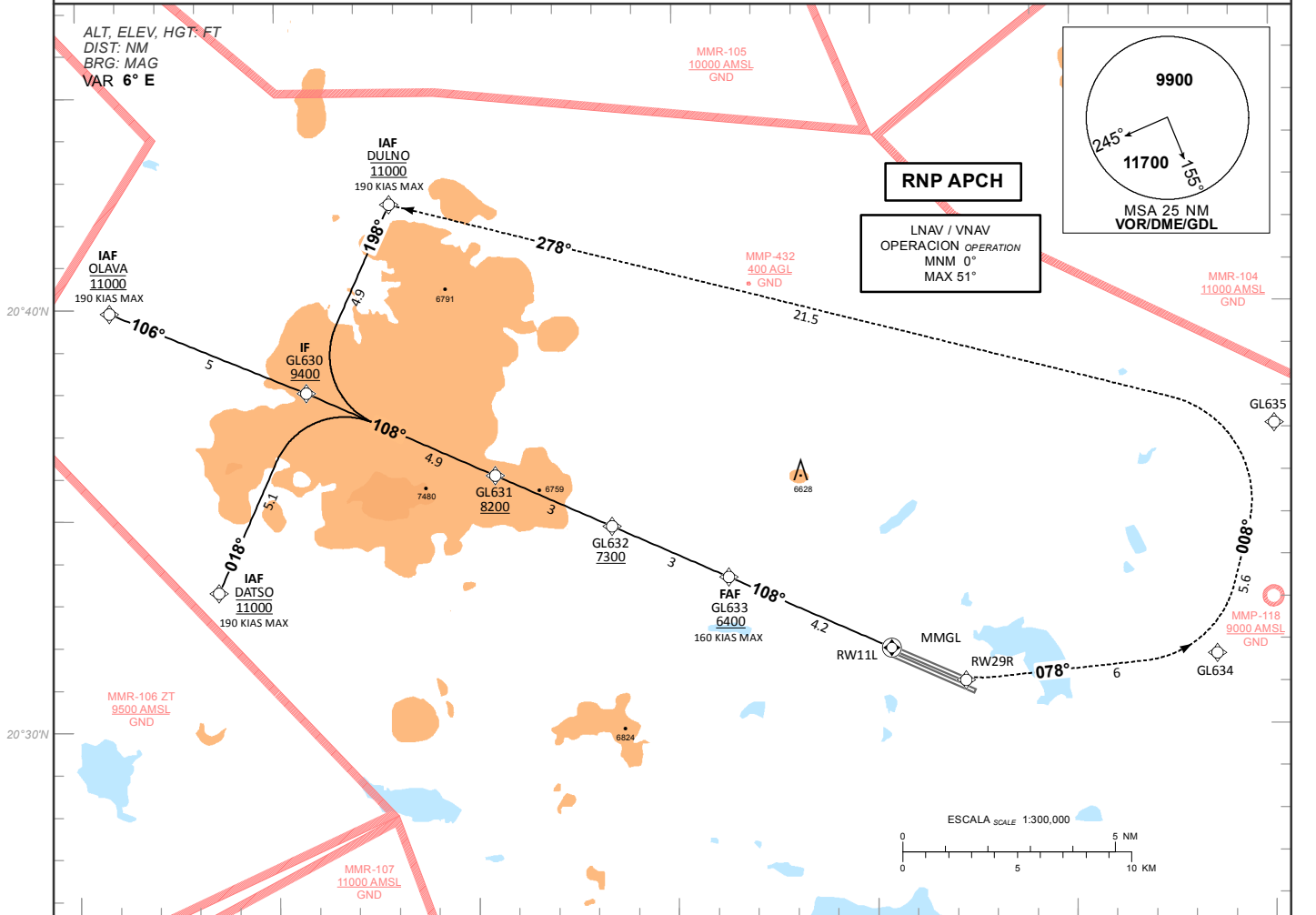
RNP RWY 11L

INSTRUMENT APPROACH CHART (IAC)

| | | | | | |
|--------------|----------------------------|---------------|--------------|----------------|-----------------|
| TWR 118.1 | APP 119.3, 120.8, 128.9 | ATIS 127.9 | SMC 121.9 | EMERG 121.5 | AD ELEV 5013 FT |
|--------------|----------------------------|---------------|--------------|----------------|-----------------|

APCH FRUSTRADA: ASCIENDA EN CURSO 108° HASTA RW29R, Y PROSIGA EN APROXIMACION FRUSTRADA HASTA DULNO Y CONTINUE DE ACUERDO A INSTRUCCIONES DEL ATC.
MISSED APCH: CLIMB ON COURSE 108° TO RW29R, AND PROCEED ON MISSED APPROACH TRACK TO DULNO AND CONTINUE ACCORDING ATC INSTRUCTIONS.

RMK: -GNSS REQUERIDO GNSS REQUIRED



| GRADIENTE DE DESCENSO RATE OF DESCENT | FAF-THR 4.2 | | | | | | | | 5.3% | | | | ALTITUD MINIMA SEGUN DISTANCIA MINIMUM ALTITUDE ACCORDING TO DISTANCE | NM | 4.2 | | | | 3 | | 2 | | - | | - | | | | | |
|---------------------------------------|-------------|------|------|------|------|------|------|------|----------|--------|--------|-------|---|----|-----|-----|-----|------|------|------|------|---|---|---|---|---|---|---|---|---|
| | GS (KTS) | 80 | 100 | 120 | 140 | 160 | 180 | 200 | FT / MIN | 425 | 532 | 638 | | | 744 | 851 | 957 | 1063 | 6400 | 6020 | 5700 | - | - | - | - | - | - | - | - | - |
| | MIN : SEC | 3:09 | 2:31 | 2:06 | 1:48 | 1:35 | 1:24 | 1:16 | FT | (1390) | (1010) | (690) | | | - | - | - | - | - | - | - | - | - | - | - | - | - | - | - | |

CAMBIOS: NOTA

| CAT | LNNAV / VNAV COMPLETO / FULL DA (DH) 5340 (330) | LNNAV / VNAV SIN SALS / SALS OUT DA (DH) 5340 (330) | LNNAV COMPLETO / FULL OCA (OCH) / MDA (MDH) 5460 (450) | LNNAV SIN SALS / SALS OUT OCA (OCH) / MDA (MDH) 5460 (450) | CIRCULANDO CIRCLING OCA (OCH) / MDA (MDH) |
|-----|---|---|--|--|---|
| | | | 1/2 (800 M) | 1 (1600 M) | 5540 (527) - 1 (1600 M) |
| | 1/2 (800 M) | 1 (1600 M) | | | 5780 (767) - 1 (1600 M) |
| | | | 7/8 (1400 M) | 1 3/8 (2100 M) | 6490 (1477) - 3 (4800 M) |
| D | | | | | 6510 (1497) - 3 (4800 M) |

TABLA DE CODIFICACIÓN DEL PROCEDIMIENTO DE APROXIMACIÓN POR INSTRUMENTOS (RNP) PISTA 11L
 RUNWAY 11L (RNP) INSTRUMENT APPROACH PROCEDURE CODING TABLE

IAF DULNO

| Número de serie / Serial Number | Descriptor de trayectoria / Path terminator | Identificador de punto de recorrido / Waypoint Identifier | Sobrevuelo / Fly Over | Curso / derrota Course / Track *MAG (*T) | Variación Magnética / Magnetic variation (*) | Distancia / Distance (NM) | Dirección del Viraje / Turn direction | Altitud / Altitude (FT) | Velocidad / Speed (KTS) | VPA (*) / TCH (FT) | Especificación de Navegación / Navigation Specification |
|---------------------------------|---|---|-----------------------|--|--|---------------------------|---------------------------------------|-------------------------|-------------------------|--------------------|---|
| 10 | IF | DULNO | - | | | | | @11000 | -190 | | RNP APCH |
| 20 | TF | GL630 | - | 198 (204) | 6 | 4.9 | | +9400 | | | RNP APCH |
| 30 | TF | GL631 | - | 108 (113.9) | 6 | 4.9 | | +8200 | | | RNP APCH |
| 40 | TF | GL632 | - | 108 (114) | 6 | 3 | | +7300 | | | RNP APCH |
| 50 | TF | GL633 | - | 108 (114) | 6 | 3 | | +6400 | -160 | | RNP APCH |
| 60 | TF | RW11L | Y | 108 (114) | 6 | 4.2 | | - | | 3 (50) | RNP APCH |
| 70 | TF | RW29R | - | 108 (114) | 6 | 1.9 | | - | | | RNP APCH |
| 80 | TF | GL634 | - | 078 (084.4) | 6 | 6 | | - | | | RNP APCH |
| 90 | TF | GL635 | - | 008 (014.4) | 6 | 5.6 | | - | | | RNP APCH |
| 100 | TF | DULNO | - | 278 (284.4) | 6 | 21.5 | | @11000 | -190 | | RNP APCH |

IAF DATSO

| Número de serie / Serial Number | Descriptor de trayectoria / Path terminator | Identificador de punto de recorrido / Waypoint Identifier | Sobrevuelo / Fly Over | Curso / derrota Course / Track *MAG (*T) | Variación Magnética / Magnetic variation (*) | Distancia / Distance (NM) | Dirección del Viraje / Turn direction | Altitud / Altitude (FT) | Velocidad / Speed (KTS) | VPA (*) / TCH (FT) | Especificación de Navegación / Navigation Specification |
|---------------------------------|---|---|-----------------------|--|--|---------------------------|---------------------------------------|-------------------------|-------------------------|--------------------|---|
| 10 | IF | DATSO | - | | | | | @11000 | -190 | | RNP APCH |
| 20 | TF | GL630 | - | 018 (024) | 6 | 5.1 | | +9400 | | | RNP APCH |
| 30 | TF | GL631 | - | 108 (113.9) | 6 | 4.9 | | +8200 | | | RNP APCH |
| 40 | TF | GL632 | - | 108 (114) | 6 | 3 | | +7300 | | | RNP APCH |
| 50 | TF | GL633 | - | 108 (114) | 6 | 3 | | +6400 | -160 | | RNP APCH |
| 60 | TF | RW11L | Y | 108 (114) | 6 | 4.2 | | - | | 3 (50) | RNP APCH |
| 70 | TF | RW29R | - | 108 (114) | 6 | 1.9 | | - | | | RNP APCH |
| 80 | TF | GL634 | - | 078 (084.4) | 6 | 6 | | - | | | RNP APCH |
| 90 | TF | GL635 | - | 008 (014.4) | 6 | 5.6 | | - | | | RNP APCH |
| 100 | TF | DULNO | - | 278 (284.4) | 6 | 21.5 | | @11000 | -190 | | RNP APCH |

IAF OLAVA

| Número de serie / Serial Number | Descriptor de trayectoria / Path terminator | Identificador de punto de recorrido / Waypoint Identifier | Sobrevuelo / Fly Over | Curso / derrota Course / Track *MAG (*T) | Variación Magnética / Magnetic variation (*) | Distancia / Distance (NM) | Dirección del Viraje / Turn direction | Altitud / Altitude (FT) | Velocidad / Speed (KTS) | VPA (*) / TCH (FT) | Especificación de Navegación / Navigation Specification |
|---------------------------------|---|---|-----------------------|--|--|---------------------------|---------------------------------------|-------------------------|-------------------------|--------------------|---|
| 10 | IF | OLAVA | - | | | | | @11000 | -190 | | RNP APCH |
| 20 | TF | GL630 | - | 106 (112.4) | 6 | 5 | | +9400 | | | RNP APCH |
| 30 | TF | GL631 | - | 108 (113.9) | 6 | 4.9 | | +8200 | | | RNP APCH |
| 40 | TF | GL632 | - | 108 (114) | 6 | 3 | | +7300 | | | RNP APCH |
| 50 | TF | GL633 | - | 108 (114) | 6 | 3 | | +6400 | -160 | | RNP APCH |
| 60 | TF | RW11L | Y | 108 (114) | 6 | 4.2 | | - | | 3 (50) | RNP APCH |
| 70 | TF | RW29R | - | 108 (114) | 6 | 1.9 | | - | | | RNP APCH |
| 80 | TF | GL634 | - | 078 (084.4) | 6 | 6 | | - | | | RNP APCH |
| 90 | TF | GL635 | - | 008 (014.4) | 6 | 5.6 | | - | | | RNP APCH |
| 100 | TF | DULNO | - | 278 (284.4) | 6 | 21.5 | | @11000 | -190 | | RNP APCH |

COORDENADAS DE LOS PUNTOS DE RECORRIDO
WAYPOINT COORDINATES

| Punto de recorrido / Waypoint | Coordenadas / Coordinates | Punto de recorrido / Waypoint | Coordenadas / Coordinates |
|-------------------------------|-------------------------------|-------------------------------|-------------------------------|
| DATSO | 20°33'16.9"N 103°36'28.6"W | GL633 | 20°33'34.2"N 103°23'40.4"W |
| DULNO | 20°42'26.9"N 103°32'08.1"W | GL634 | 20°31'40.0"N 103°11'25.6"W |
| OLAVA | 20°39'54.5"N 103°39'10.6"W | GL635 | 20°37'6.3"N 103°9'56.5"W |
| GL630 | 20°37'59.8"N 103°34'14.7"W | RW11L | 20°31'51.7"N 103°19'36.0"W |
| GL631 | 20°36'1.1"N 103°29'31.0"W | RW29R | 20°31'4.8"N 103°17'44.4"W |
| GL632 | 20°34'47.7"N 103°26'35.7"W | | |